

Case Study Report

Open Abdomen Closure Using ABRA[®] Abdominal Following Emergency Splenectomy

Age: 70 **Sex:** Male | **ACell Product(s) Used:** ABRA[®] Abdominal Wall Closure System.

Background: Patient had an emergency splenectomy resulting in a retracted abdominal defect. After a week of Negative Pressure Wound Therapy, the surgeon elected to install an ABRA[®] Abdominal device.

Comorbidities: Leukemia | **Outcome:** Primary closure of abdominal wall achieved on day 8.



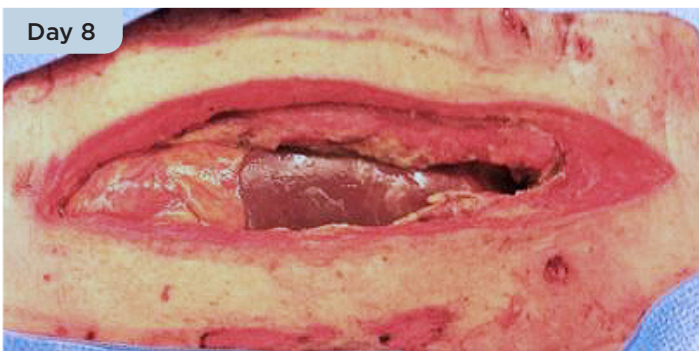
Day 0
ABRA Abdominal is installed.



Day 3
Reduction in abdominal defect is seen due to unrelenting, dynamic tension.



Day 6
Further reduction in abdominal defect is observed.*



Day 8
Primary closure achieved with regular adjustment of elastomers.

This case contains the opinions of and personal techniques practiced by the treating physician. The technique presented herein is for informational purposes only. The decision of which techniques to use in a particular clinical application lies with the physician based on patient profile, particular circumstances surrounding the repair, and previous clinical experiences.

*ABRA Abdominal is not specifically cleared for concomitant use with Negative Pressure Wound Therapy. NPWT is used with ABRA Abdominal only if clinician independently decides to utilize it.

Rx ONLY Refer to IFU supplied with each device for indications, contraindications, and precautions.
US Toll-Free 800-826-2926 • www.acell.com © 2017 ACell, Inc. All Rights Reserved.